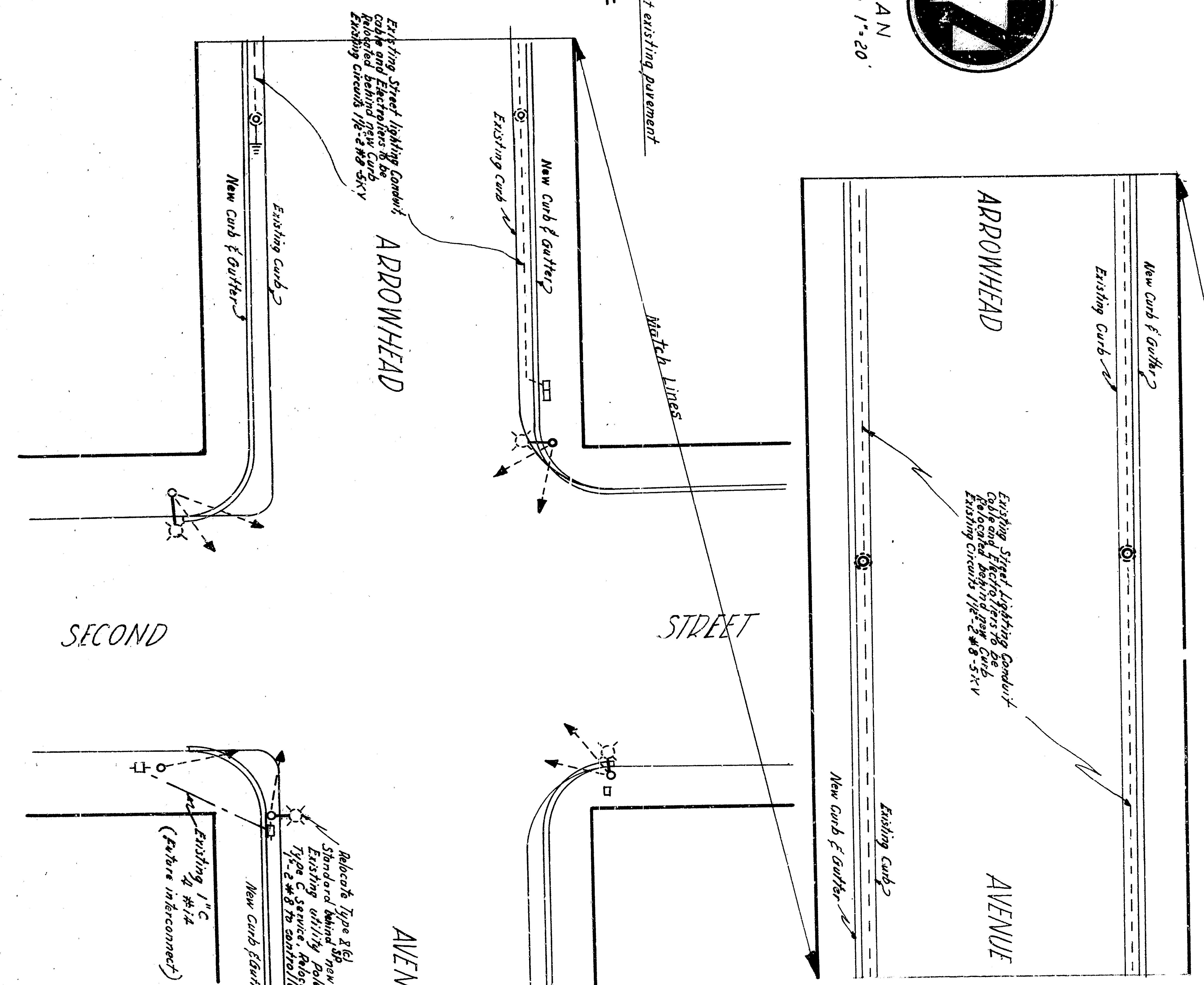
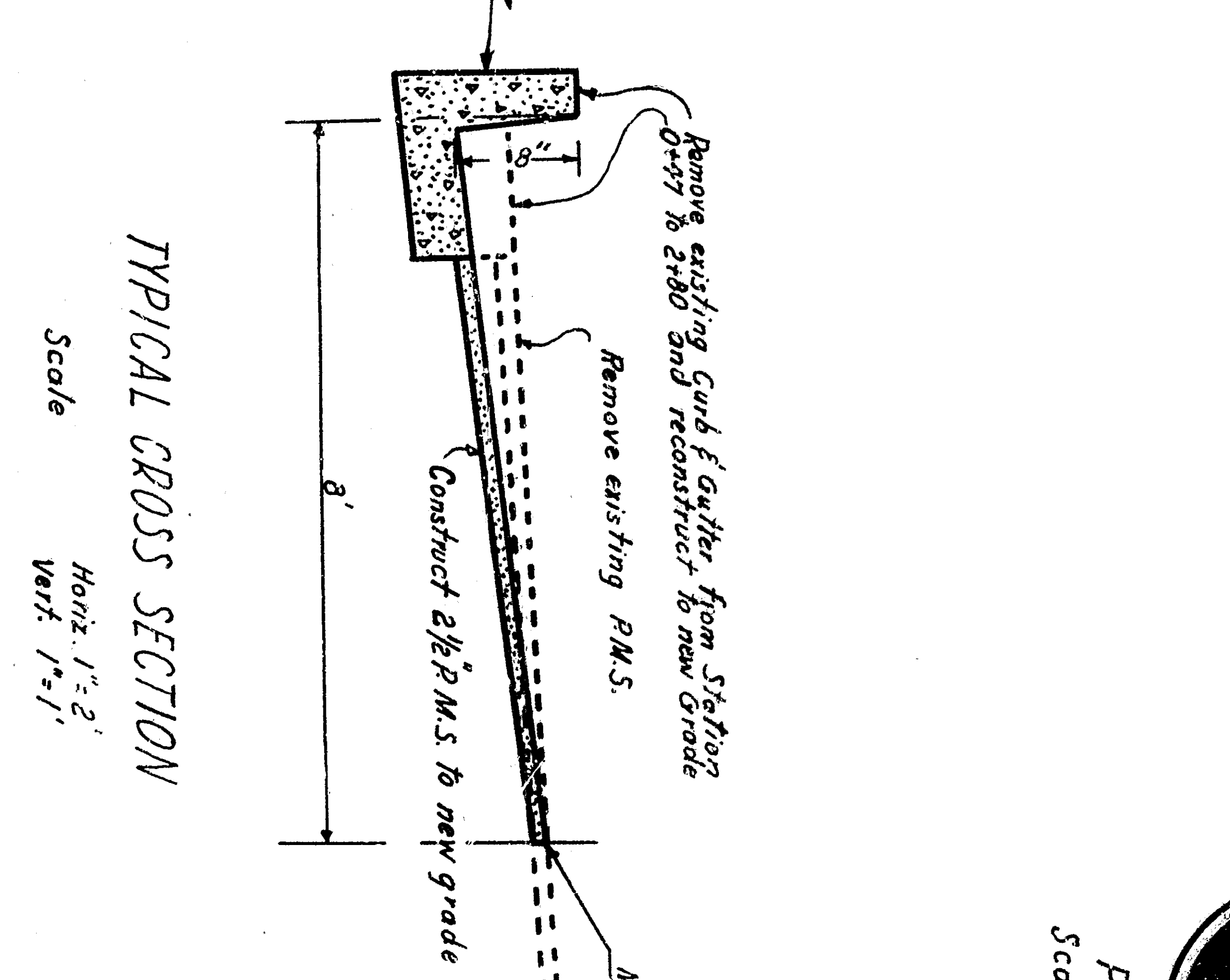
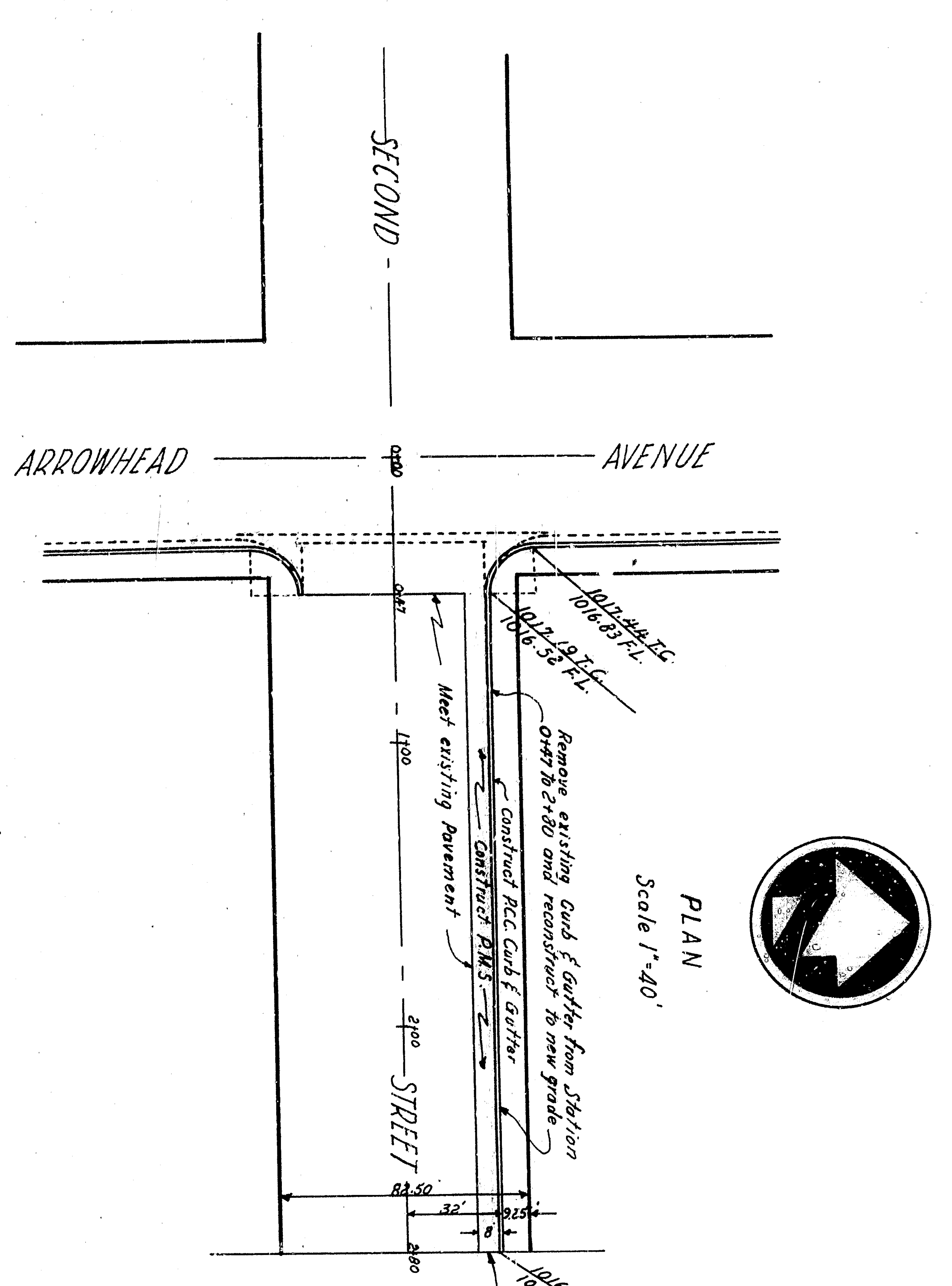
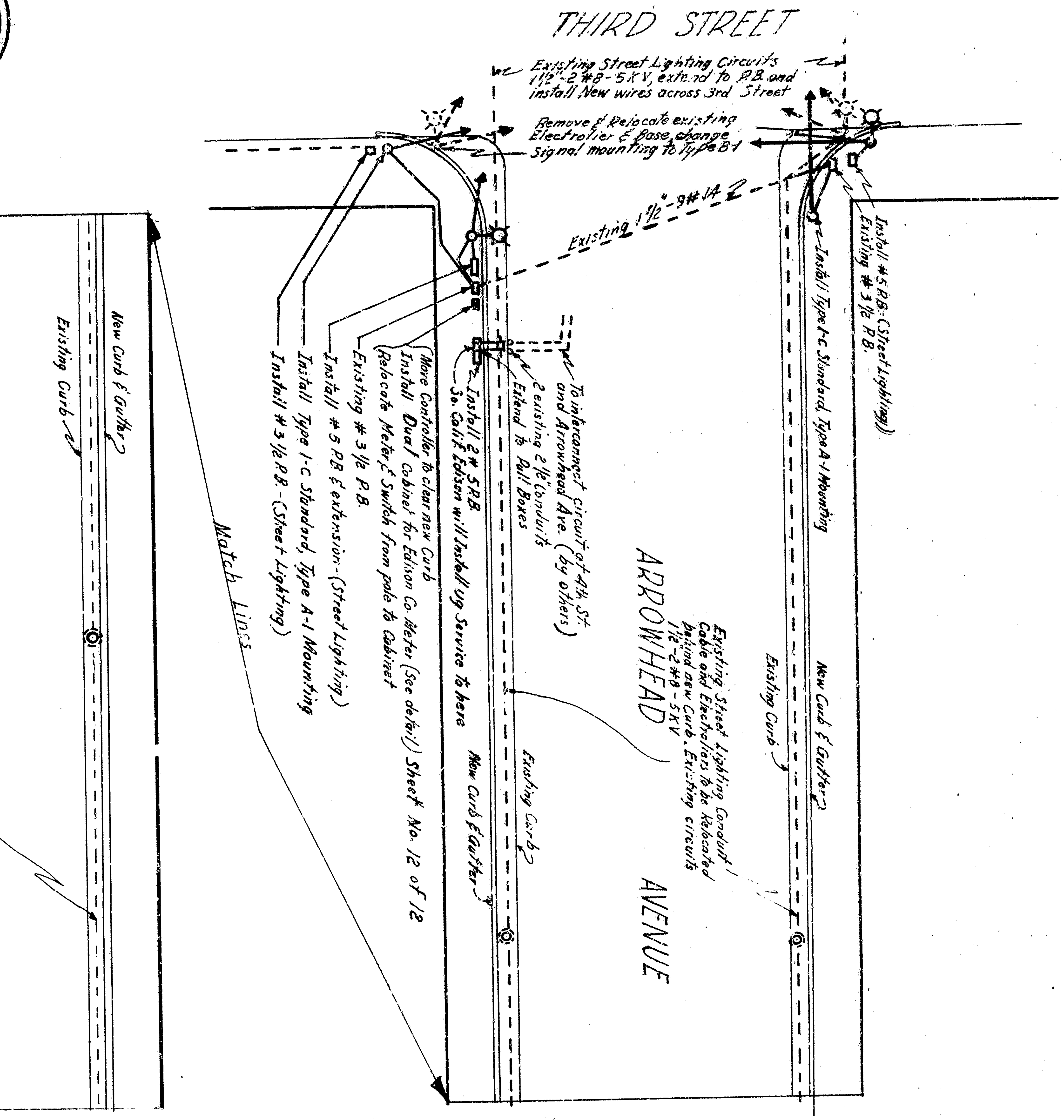
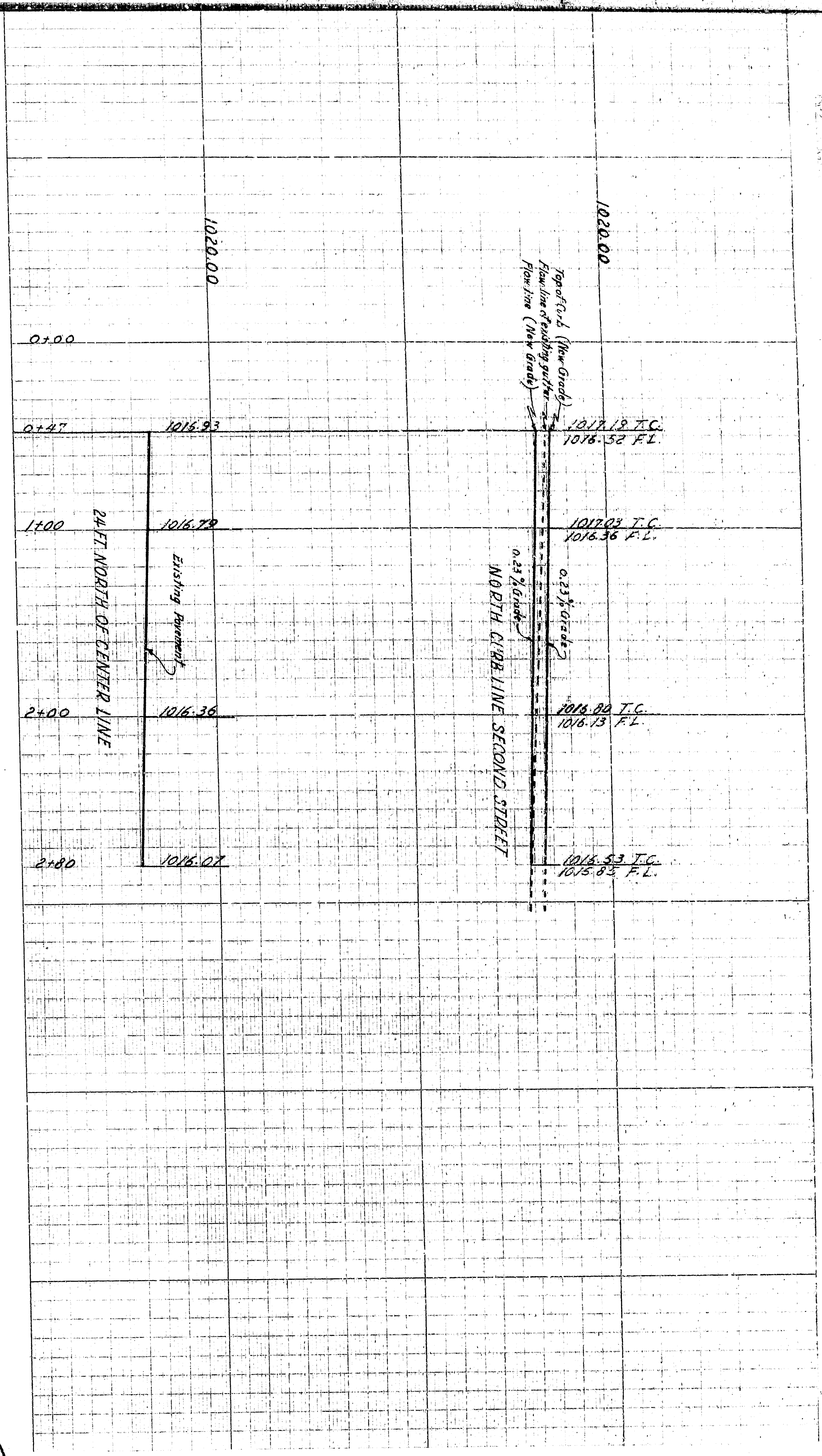


DEPARTMENT OF ENGINEERING
CITY OF SAN BERNARDINO
ARROWHEAD AVENUE
BETWEEN DIALTO AVENUE AND THIRD STREET

SUBMITTED BY	DATE	1982
APPROVED	DATE	1982
CHECKED BY	DATE	1982
REGISTERED CIVIL ENGINEER NO. 8732		
REFERENCE	DATE	1982
DRAWN BY	DATE	1982
CHECKED BY	DATE	1982
REGISTERED CIVIL ENGINEER NO. 8732		



DEPARTMENT OF ENGINEERING
 CITY OF SAN BERNARDINO
 ARROWHEAD AVENUE
 BETWEEN DIALTO AVENUE AND THIRD STREET

SUBMITTED BY	DATE	19
APPROVED	DATE	19
CHECKED BY	DATE	19
CHECKED BY	DATE	19

REGISTERED CIVIL ENGINEER NO. 8732
 REGISTERED CIVIL ENGINEER NO. 8732